

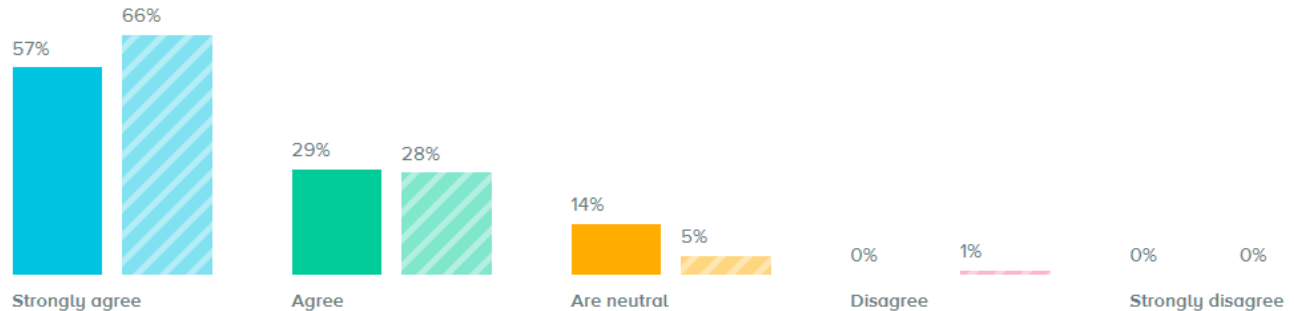
# IUSD 2015 – 2016 SUMMARY

BrightBytes (brightbytes.net)

May 2015 Survey

## Beliefs and Policy

 "Technology use in class can enhance student learning."



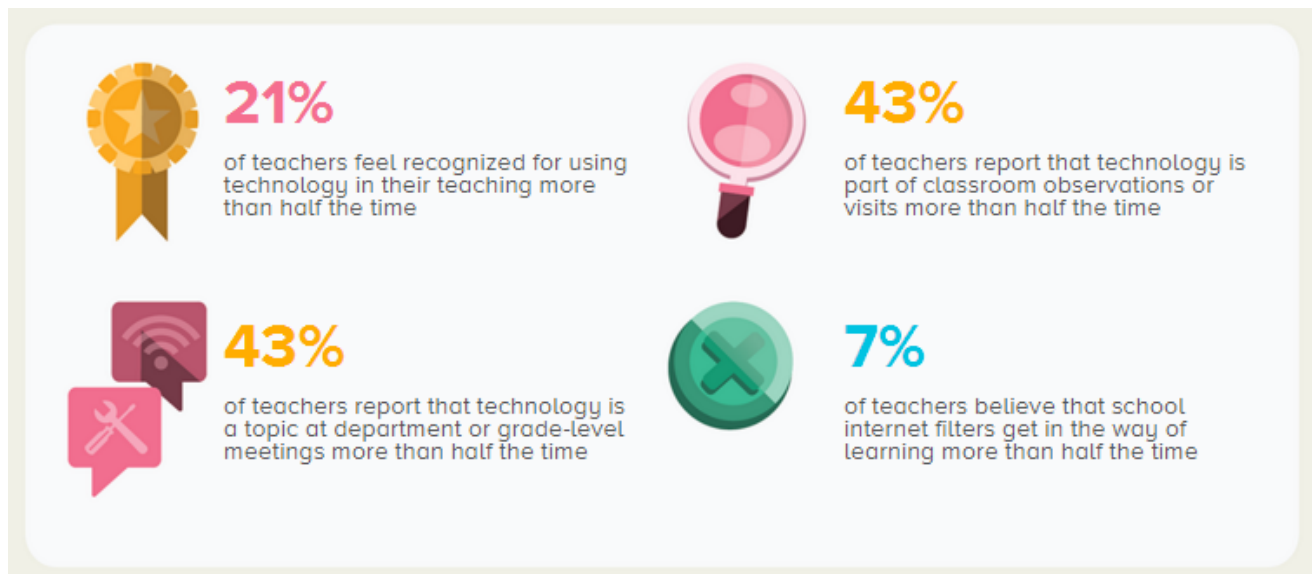
 COMPARE

 Current  
Solids

 District  
Stripes



Data > Environment > Beliefs > Teacher Beliefs for Technology Use For Learning



Reports > Supervisory Report

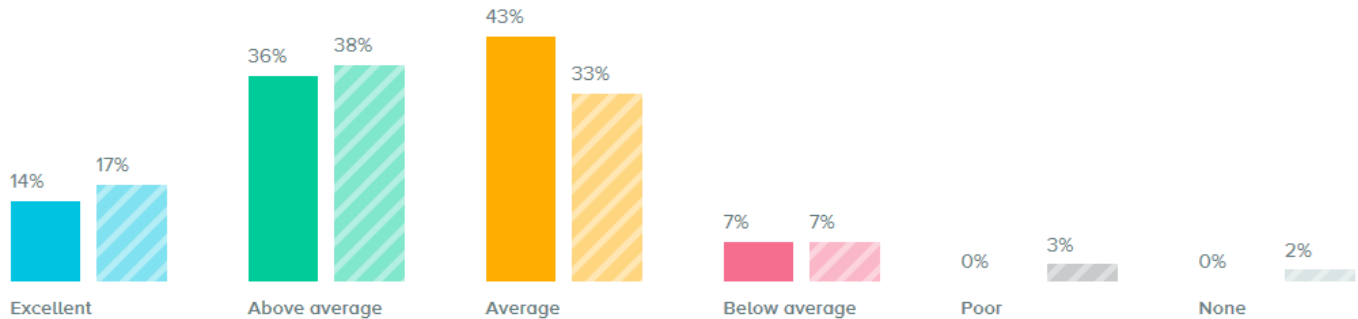
# IUSD 2015 – 2016 SUMMARY

## Support



Teachers report that the quality of support for problems disrupting instruction is

8



COMPARE



Current  
Solids



District  
Stripes

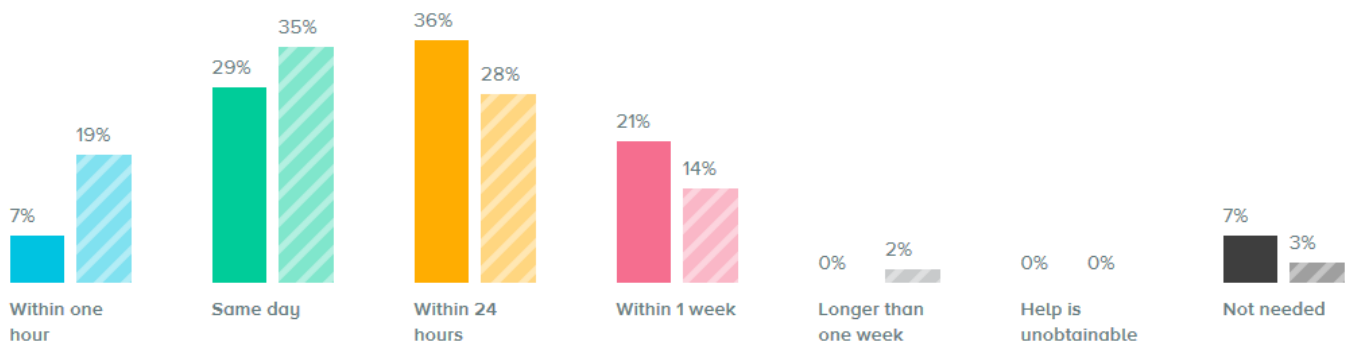


Data> Environment > Support > Quality of Technology Support Services at School



Teachers report that the speed of support for problems disrupting instruction is

9



COMPARE



Current  
Solids



District  
Stripes



Data> Environment > Support > Speed of Technology Support Services at School

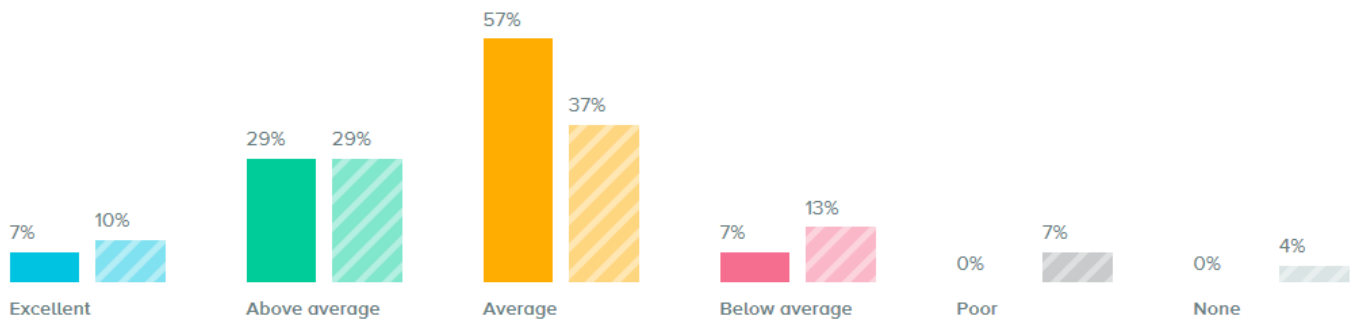
# IUSD 2015 – 2016 SUMMARY

## Instructional Technology and Professional Learning



Teachers report that the quality of support for instructional technology planning is

3

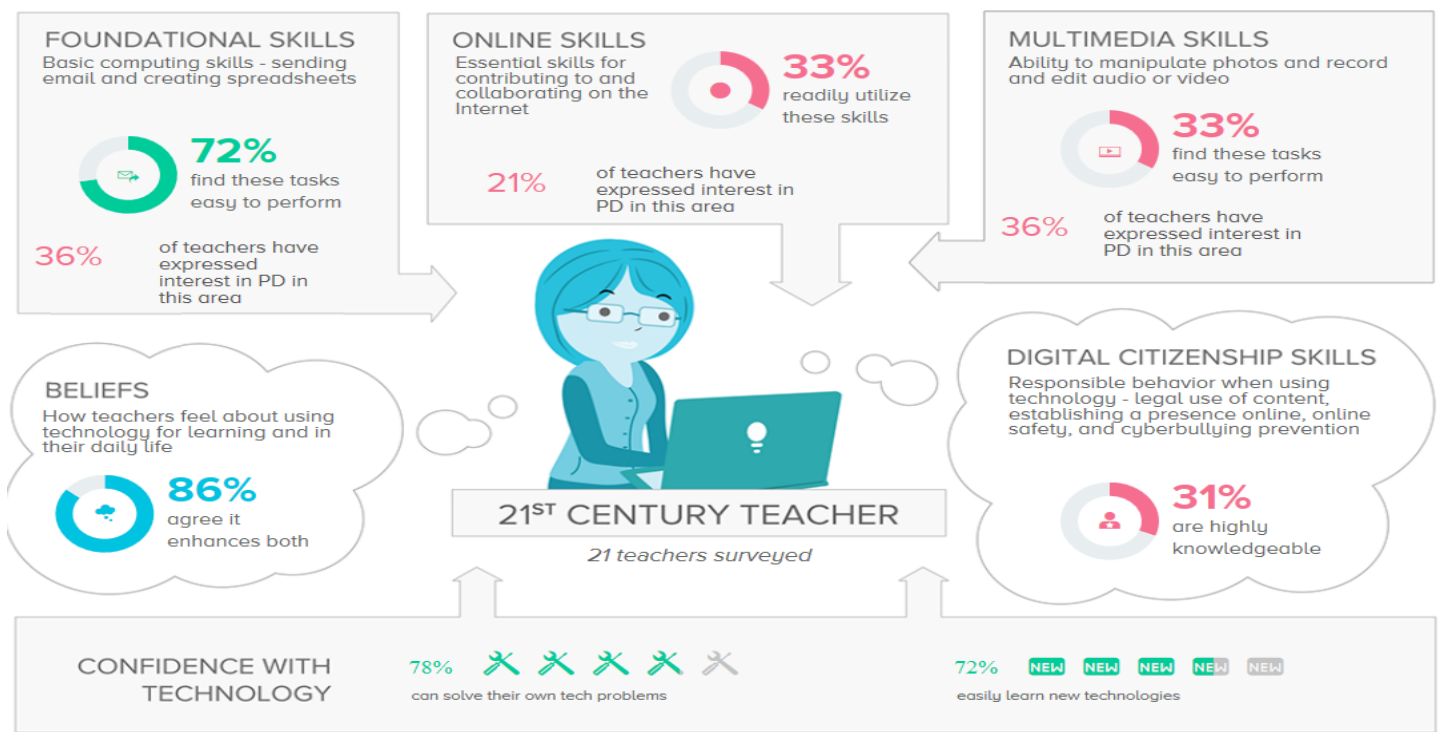


COMPARE

Current Solids

District Stripes

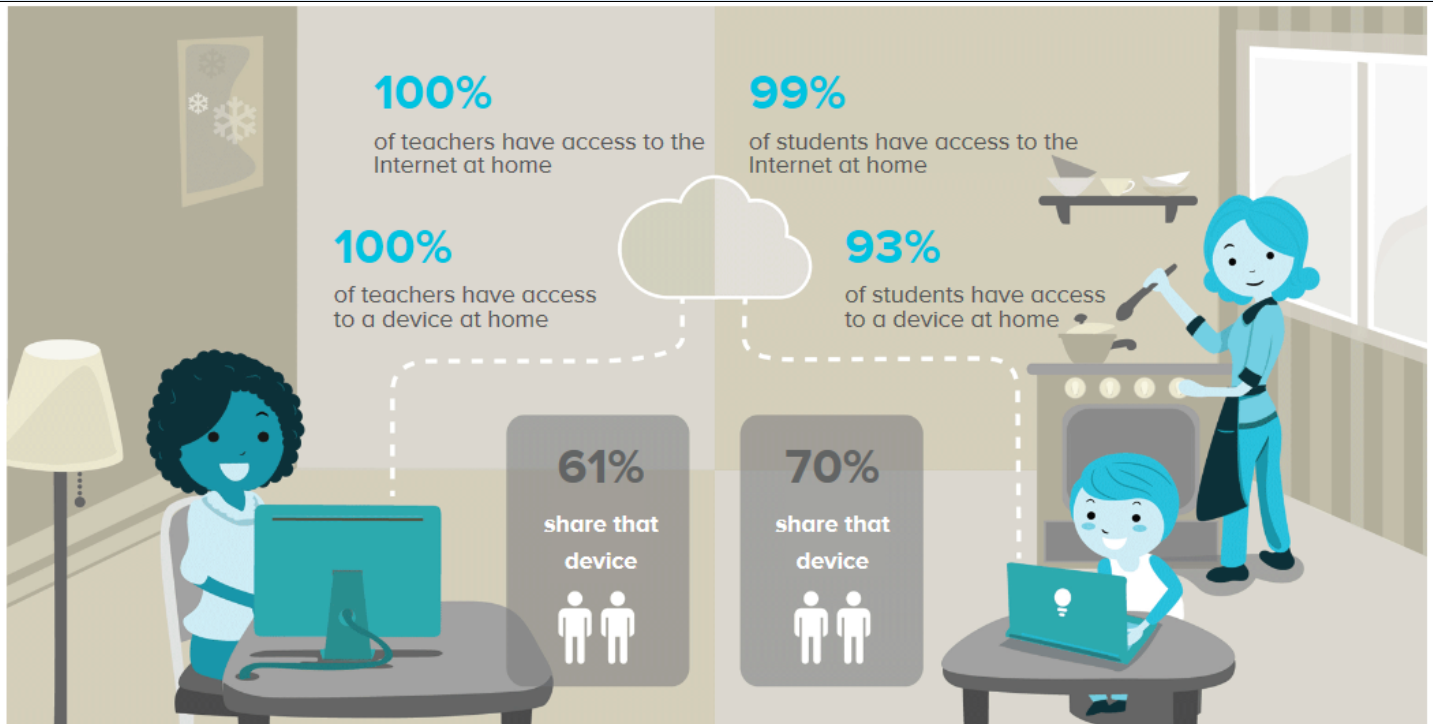
Data > Environment > Support > Quality of Technology Support Services at School



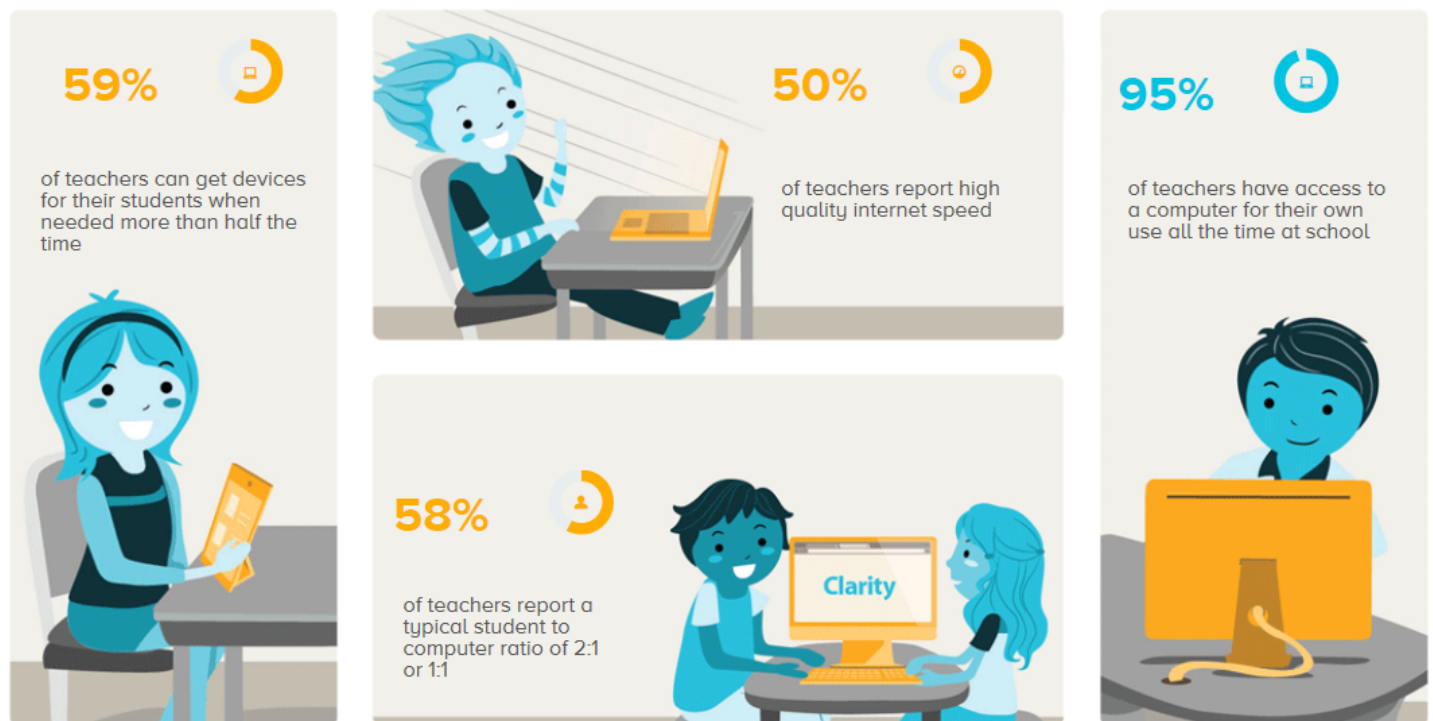
Reports > Professional Development Report

# IUSD 2015 – 2016 SUMMARY

## Access



Reports > Infrastructure at Home Report



Reports > Infrastructure at School Report

# IUSD 2015 – 2016 SUMMARY

## Instruction and Student Learning

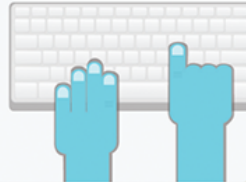
**46%**

of students are asked to collaborate online with classmates at least monthly



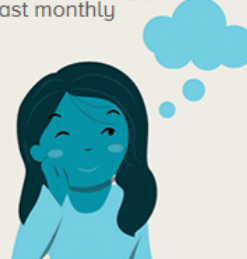
**17%**

of students are asked to write online at least monthly



**12%**

of students are asked to identify and solve authentic problems using technology at least monthly



**41%**

of teachers ask their students to complete online assessments at least monthly



**76%**

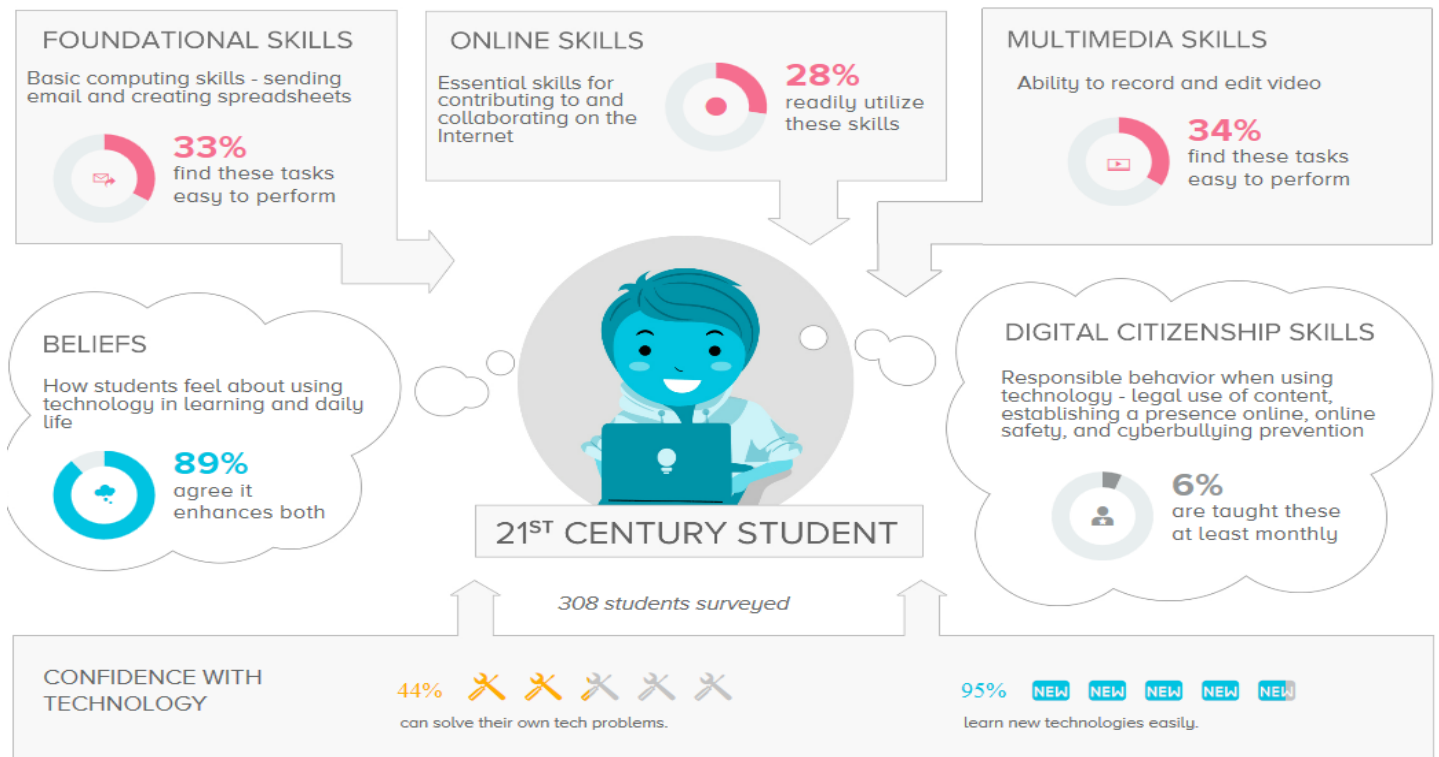
of teachers spend less than 3 hours per year teaching digital citizenship



**71%**

of your teachers who use assistive technology use it with students at least monthly

## Reports > 21<sup>st</sup> Century Learning Report



## Reports > Curriculum Reports